

McCall-Thomas
Engineering Company, Inc.

McCall-Thomas Engineering

Providing quality engineering & technical services since 1945.

ABOUT McT

McCall-Thomas Engineering is a multi-faceted engineering firm specializing in Electrical and Telecommunication industries. We have multiple divisions including the:

- Communications Engineering Division
- Electrical Engineering Division
- Electric Utility Service Division
- Electric Field Operations & UAS
- McT Learning Center
- Print Services





Communication Engineering

Our Services



Outside Plant Operations

- Fiber (FTTx) Electronic Staking
- Cutover Services
- GPS Mapping Data Collection and Inventory Services
- Computer Aided Staking
- Joint Use Agreements and Audits
- Permits and Easements
- Project Management
- Printing, Map Reproduction, and Archiving
- Fiber FTTx Testing
- Inspection of Construction
- Fiber to the Home

Design, Plans, & Specifications

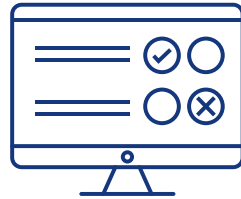
- Network Design Services
- Equipment Plans, Specifications, and Procurement
- Bid Process and Project Management
- RUS Loan and Grant Applications
- RUS Contracts Administration and Closeout Procedures
- FTTx - Active and Passive Design, P&S and Testing
- Voice, Video, Wireless, and Data Network Design
- GIS Consulting Services
- Communications Tower Design

Project Management

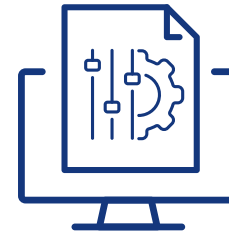
We offer complete project management from start to finish.



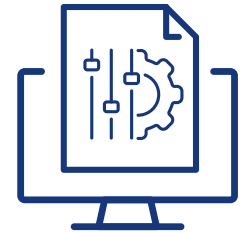
Secure Grants
& Loans



Initial Project
Planning



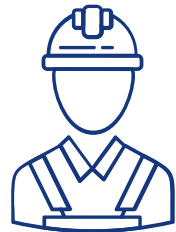
Digital & Hand
Drawn Designs



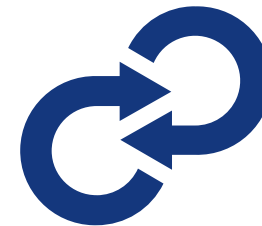
Staking



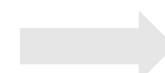
Permitting



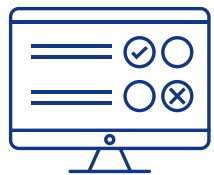
On Site
Inspections



Regular Project
Updates



Project
Closeouts



Project Planning & Management

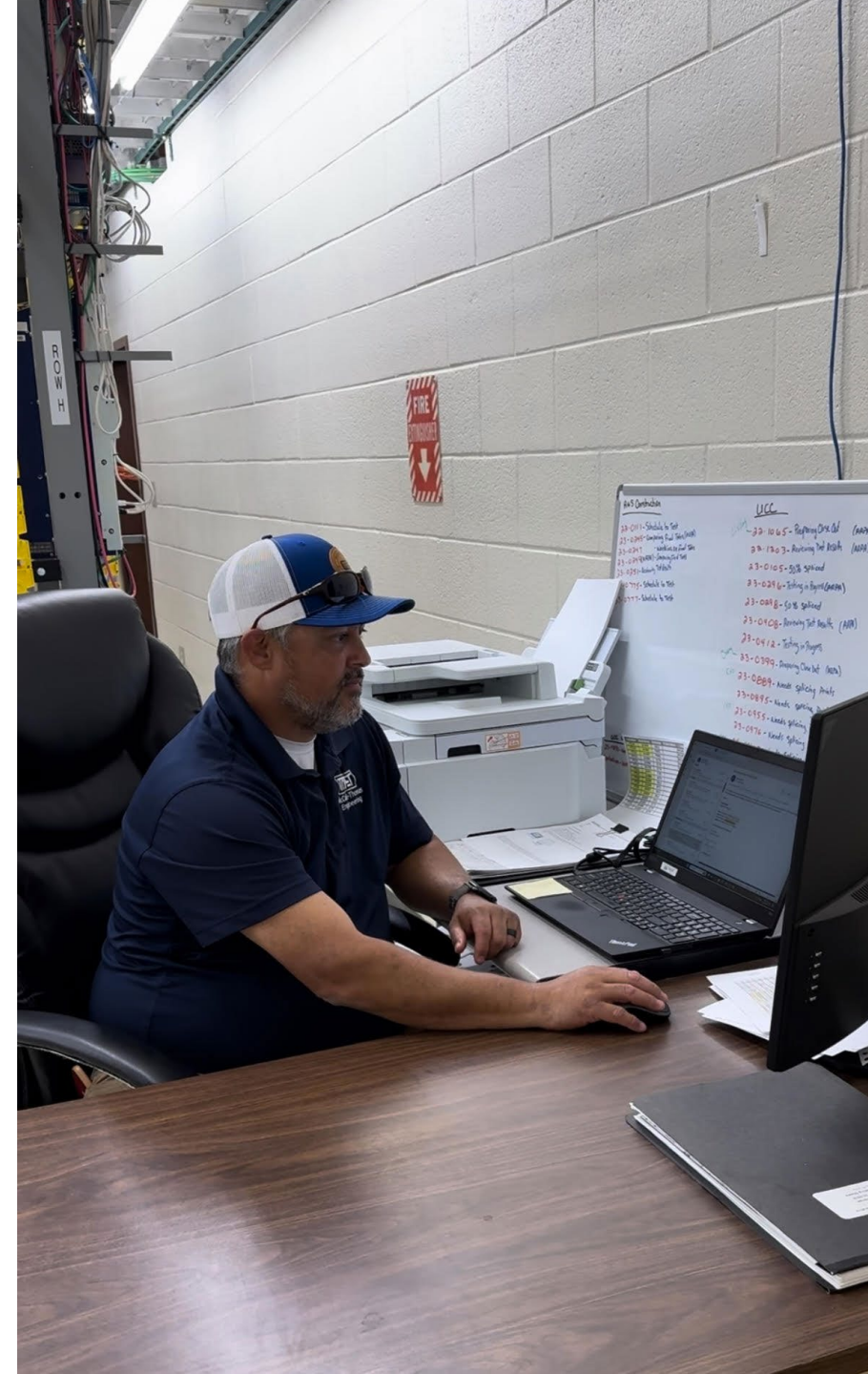
Meeting client needs and expectations require preliminary meetings to determine the scope of work for a project.





Secure Grants & Loans

- RUS Infrastructure
- Reconnect





Staking & Design

Depending on the clients needs we can offer both digital and hand drawn sheets and design.





Staking Process – Electronic

The client will illustrate the area designated for development. McT will utilize various resources which contain information on existing infrastructure, road data, and property boundaries. **McT will**



Create staking sheets that illustrate construction conditions and specifications with the client's approval. The staking sheets will indicate placement of handholes or pedestals, FDH sites, and the specifications for fiber placement.



Confirm all equipment placements and identify any existing utility, or any other obstacle in the path of construction, such as culverts or old asphalt driveways.



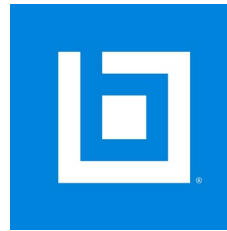
Distribute construction sheets to inspectors and construction teams. Throughout the construction process, inspectors will document any alterations on the sheets.

Our Software

Our technology and design programs we use:



AutoCad



Bluebeam



CrescentLink

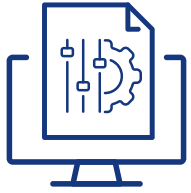


Field Maps

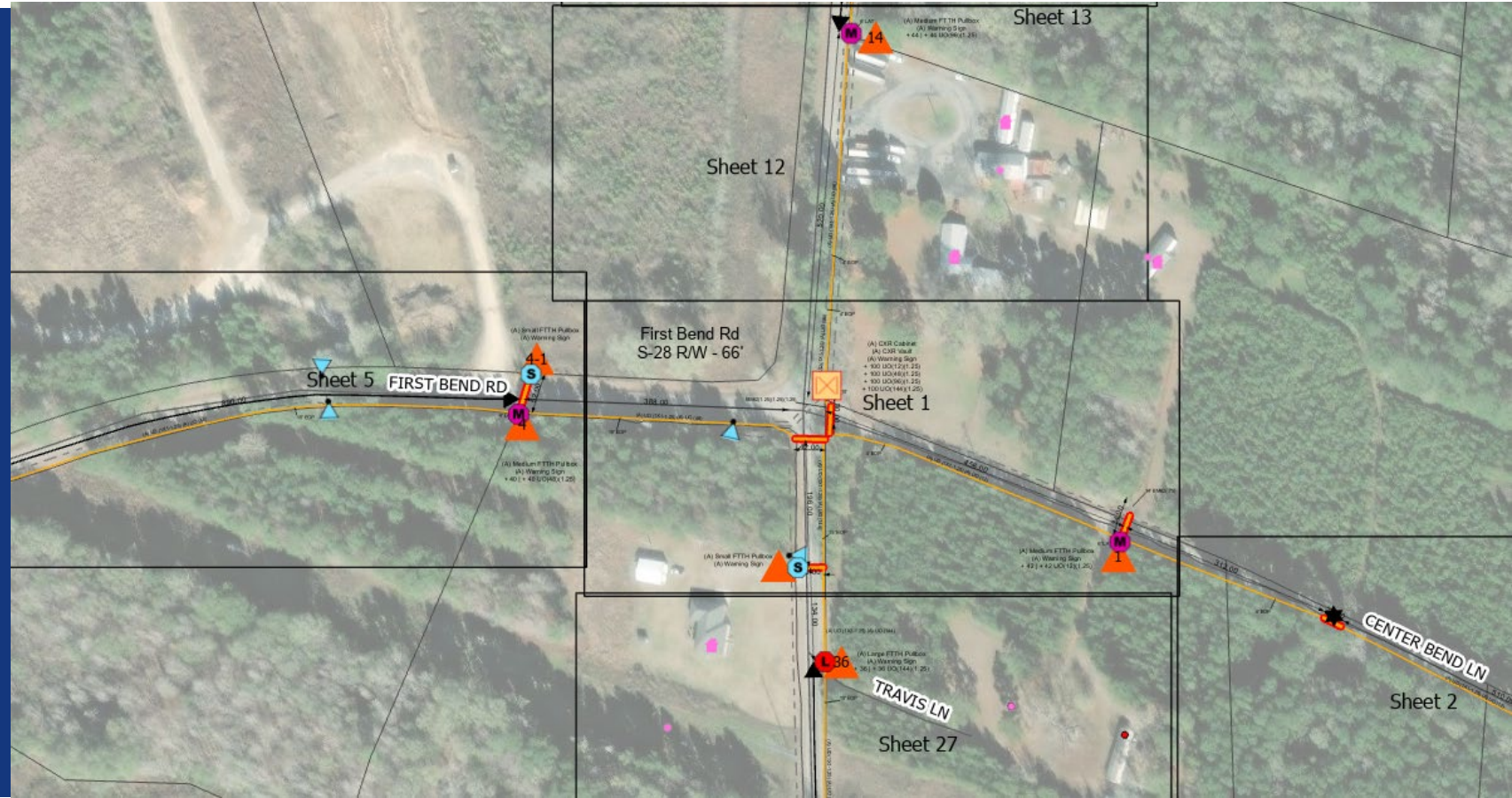


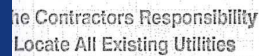
ArcGIS

ArcGIS



Construction Drawing: Key Map

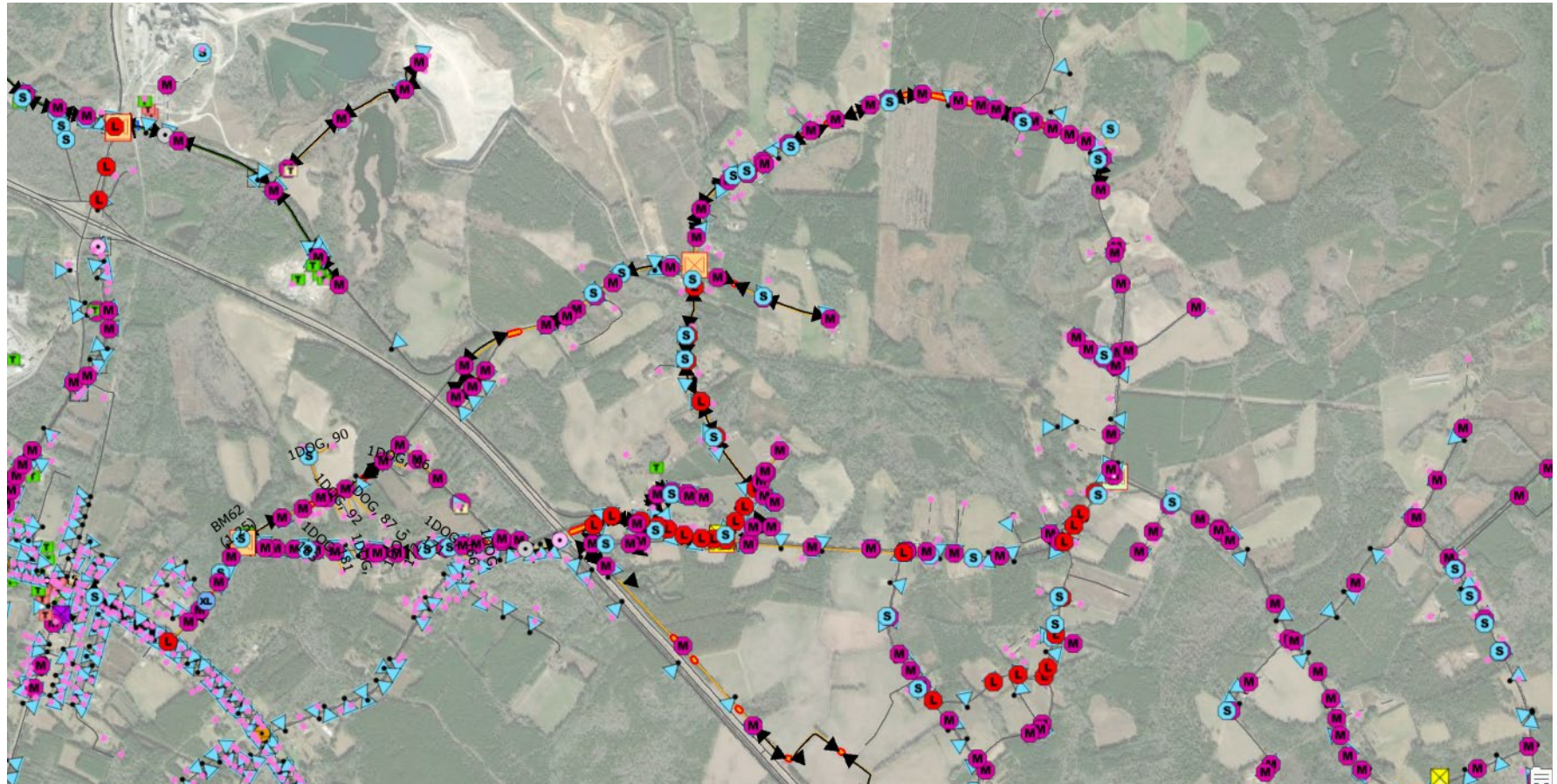






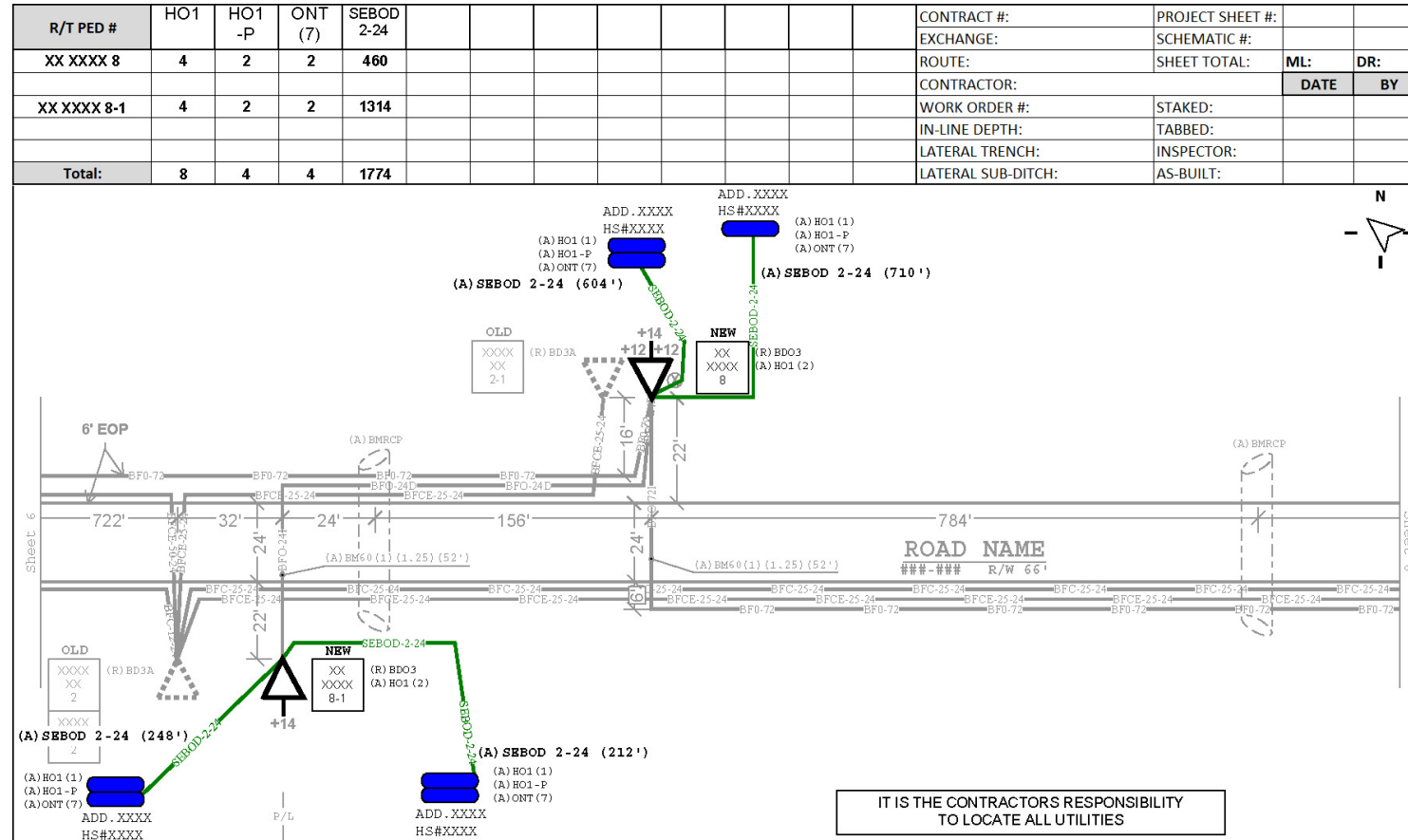
ArcGIS Design

Proposed design.



Bluebeam

Construction drawing.





Permitting

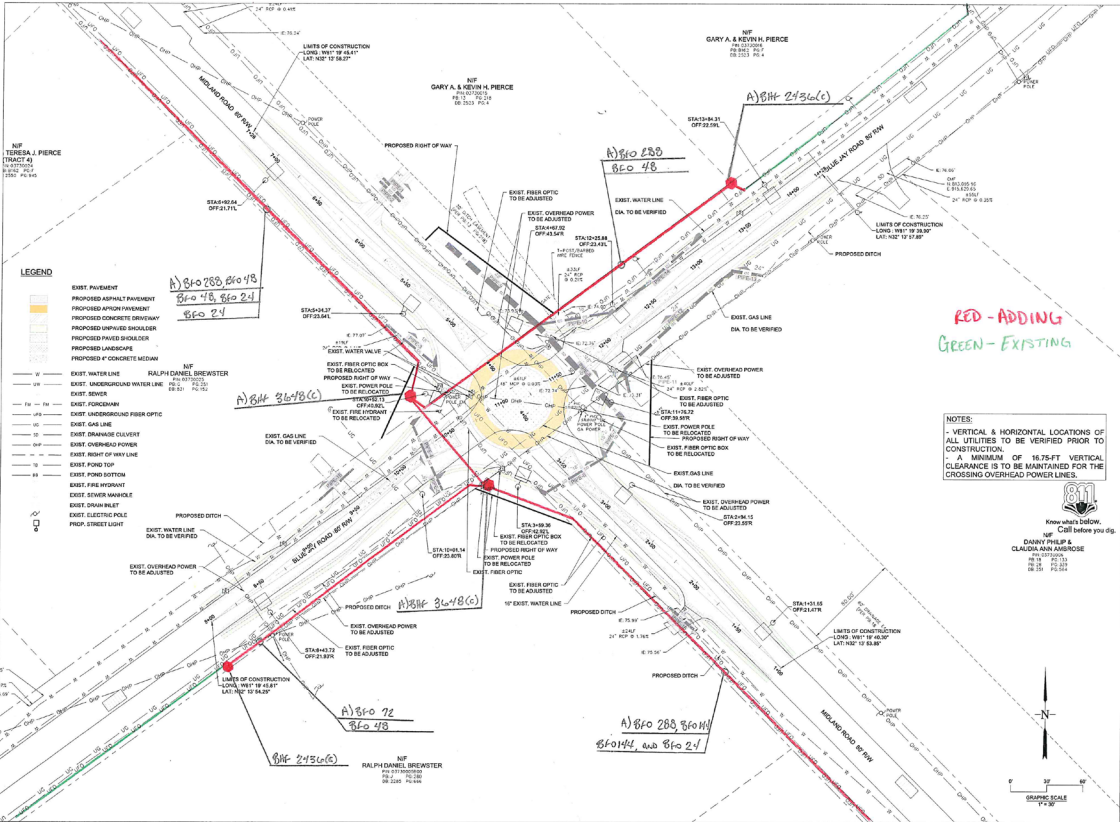
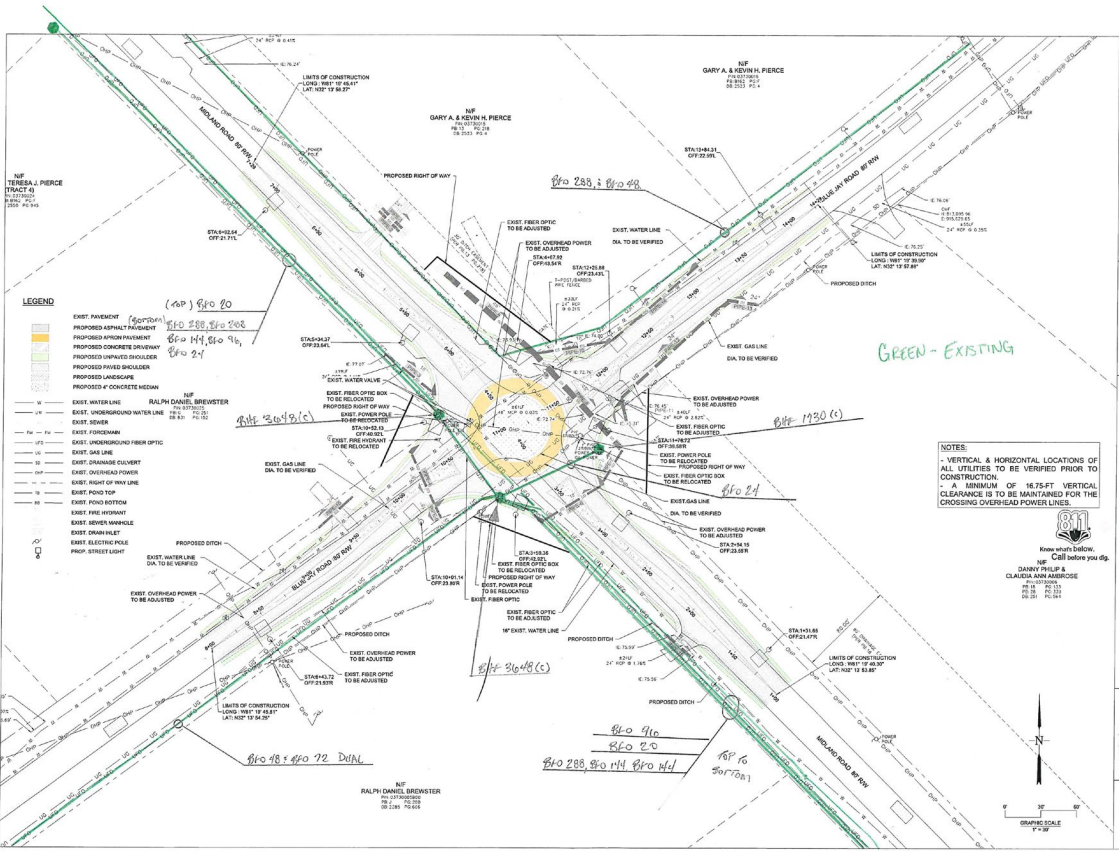
Permit Types:

- City
- County
- Highway
- Railroad
- Corp of Engineers



Road Moves & DOT Projects

We collaborated with DOT on road widening project.

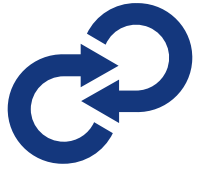




On Site Inspections

Daily on-site inspections allow for the most accurate construction management. Our inspectors take documentation of necessary plan changes and relay that information to our office personnel for updates.





Regular Project Updates

McT encourages at least one project meetings per week to allow both our client and McT to have clear directive during construction on progress, safety, and alterations.





Project Closeout

Once construction has been completed, all updates and changes to original construction plans will be reviewed and verified by field management. **Then:**

1

Field management will send those corrections to office personal **and as-built sheets will be produced.**

2

The as-builts will be tabulated and **presented in spreadsheets to reflect the overall costs** associated with the project.

3

The **client will be supplied with all documentation** of the project for their records.

FTTH Project Management Overview

McT will define the scope of work for the project and assist in bringing resources together for the success of clients' FTTH projects.

Before construction of FTTH project:

- Establish FTTH project timelines
- Determine cost estimates
- Provide FTTH designs
- Construction drawings
- Acquire permits and easements
- Assist in construction contractor selection
- Host pre-bid and pre-construction conferences
- Inspection of construction
- Prepare weekly progress reports

After completing the construction of FTTH project:

- Review fiber test results
- Prepare as constructed drawings
- Provide a final summary tabulation and prepare close-out documents

Contact Us.

For more information on how we can help on your next project contact one of us below.



McCall-Thomas
Engineering Company, Inc.

Joe Scruggs, P.E.

Director of Communications
Engineering Division

 843.422.1448

 jscruggs@mcteng.com

Chris Zeigler

Manager of Field Operations

 980.275.0184

 czeigler@mcteng.com

Stewart Craig

Engineering Assistant III

 803.662.4237

 scraig@mcteng.com

Robby O'Dell, P.E.

Manager of Business Development

 843.209.1852

 rodell@mcteng.com